



9 Park Corner, Windsor, Berkshire, SL4 4DR

## **Location**

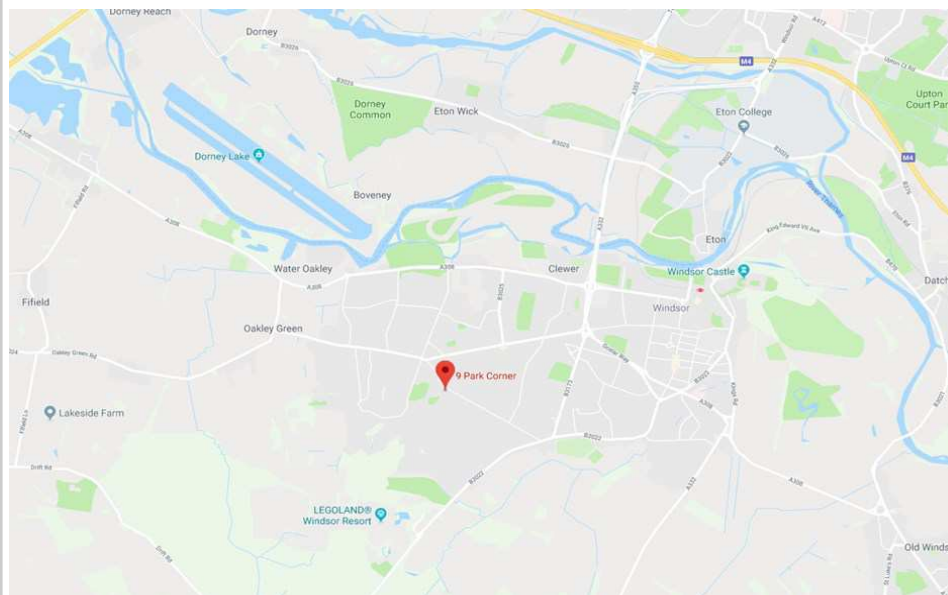
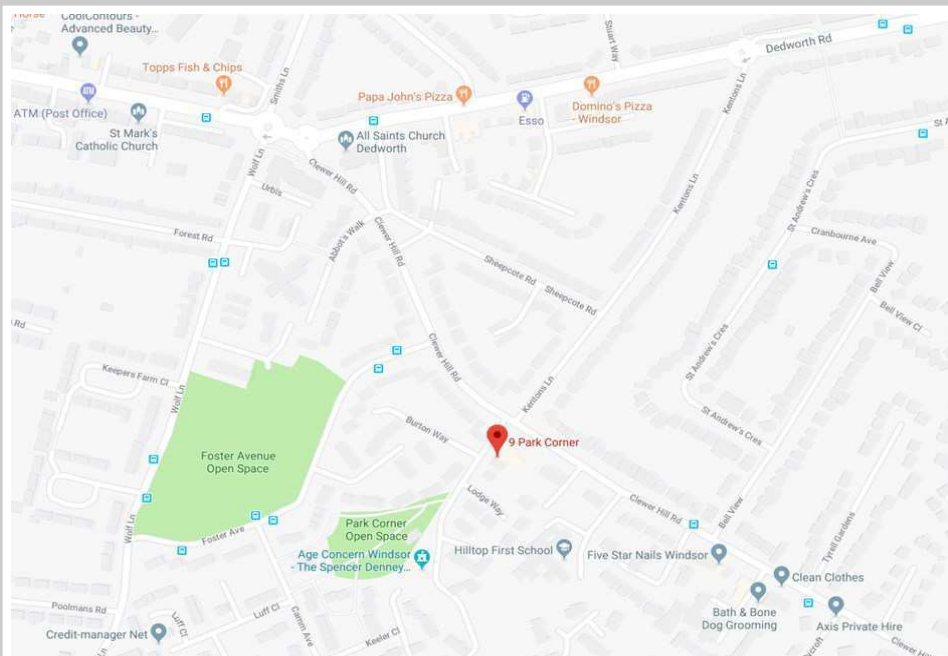
Our new development; 9 Park Corner in Windsor, Berkshire, comprises 9 beautiful apartments. This locale is considered a highly desirable commuter town, being within a 20-minute journey into Heathrow and good links into London.

The local area has multiple schools with an “Outstanding” rating from OFSTED; Hilltop First School & Nursery Class, and Windsor Girls’ School (approx. 15-minute walk). These beautiful apartments are approximately 2 miles away from Legoland Windsor Resort, and have many beautifully landscaped parks and playgrounds in the vicinity, making it an ideal location for families and young professionals.

The apartments are also conveniently located within a 5 - minute walk from the nearest supermarket. With both Windsor High Street and Nicholson's Shopping Centre in Maidenhead being less than a 15—minute drive away, there is easy access to multiple shopping areas. These apartments have a rear parking area with main road access for residents.







Slough – 4 miles  
Maidenhead – 5.4 miles  
Central London – 25.3 miles



Heathrow Airport – 10.2 miles  
Gatwick Airport – 46.3 miles



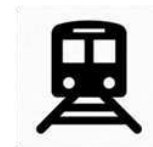
Windsor Racecourse – 1.2 miles  
Ascot Racecourse – 6.5 miles



Legoland Windsor Resort – 1.8 miles  
Datchet Golf club – 3.6 miles  
Royal Ascot Golf Club – 5.8 miles  
Temple Golf Club – 9 miles



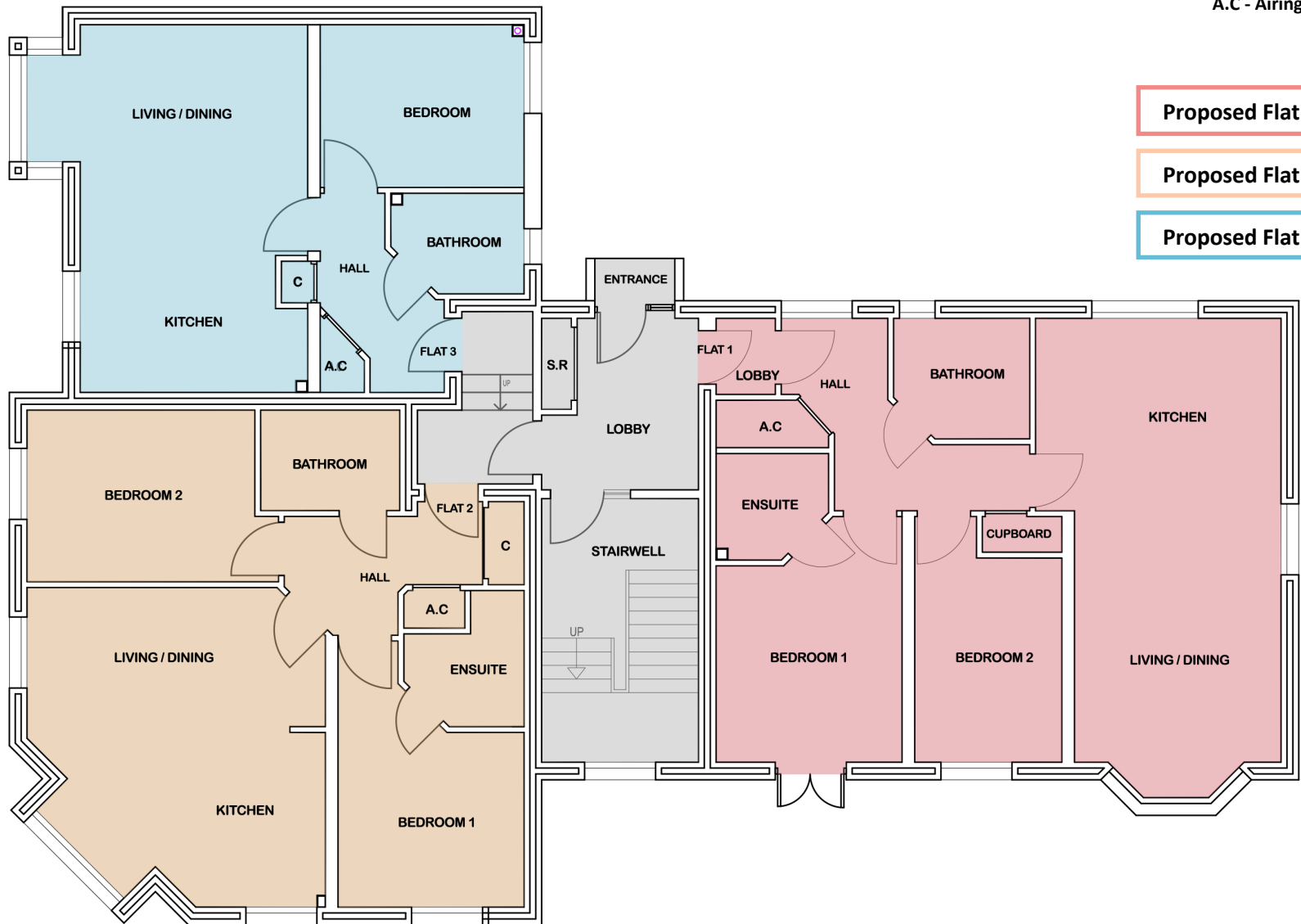
Hilltop first school – 0.1 miles  
Dedworth Middle School – 0.4 miles  
Windsor Girls' School – 0.7 miles  
Windsor College – 1.8 miles



Windsor and Eton Central Station – 2 miles  
London Paddington Station – 25.2 miles

# Floor Plans - Proposed Ground Floor

KEY: C - Cupboard  
S.R - Service Rise  
A.C - Airing Cupboard



Proposed Flat 1: 784 ft<sup>2</sup>

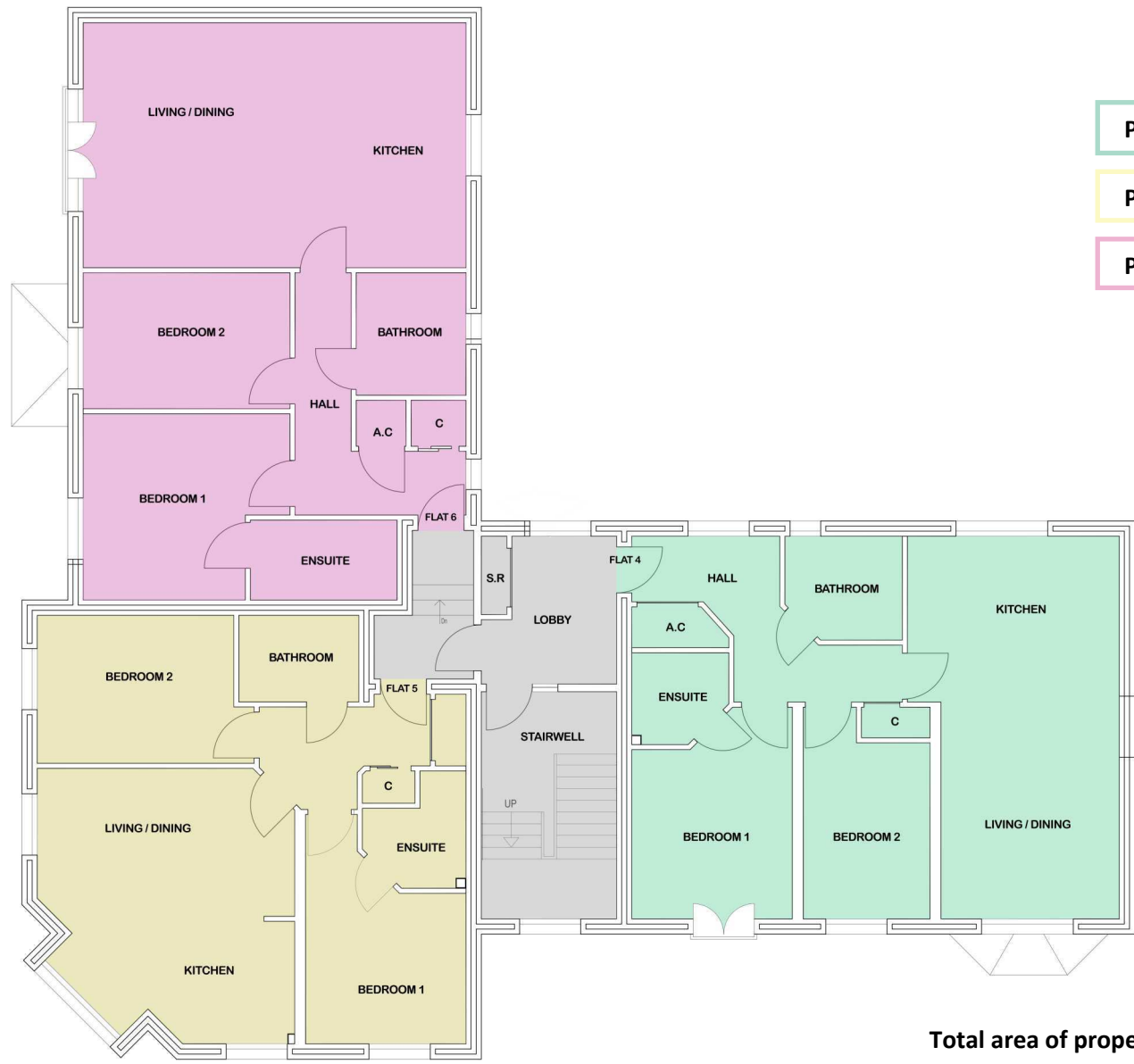
Proposed Flat 2: 698 ft<sup>2</sup>

Proposed Flat 3: 495 ft<sup>2</sup>

Total area of property in 206.7m<sup>2</sup> / 2225ft<sup>2</sup>

# Floor Plans - Proposed First Floor

KEY: C - Cupboard  
S.R - Service Rise  
A.C - Airing Cupboard



Proposed Flat 4: 772 ft<sup>2</sup>

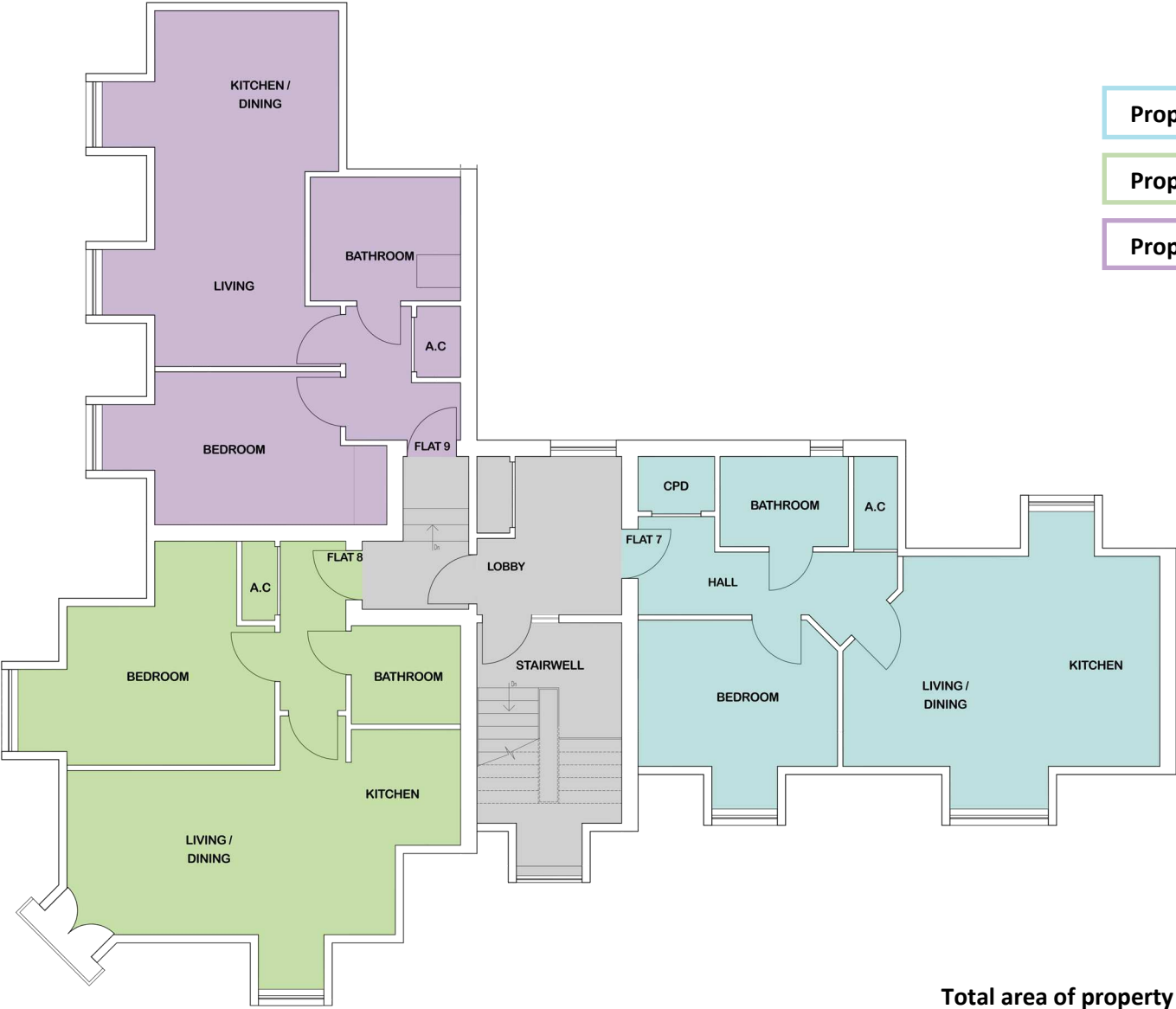
Proposed Flat 5: 698 ft<sup>2</sup>

Proposed Flat 6: 893 ft<sup>2</sup>

Total area of property in 206.7m<sup>2</sup> / 2225ft<sup>2</sup>

# Floor Plans - Proposed Second Floor

KEY: C - Cupboard  
S.R - Service Rise  
A.C - Airing Cupboard



Proposed Flat 7: 526 ft<sup>2</sup>

Proposed Flat 8: 516 ft<sup>2</sup>

Proposed Flat 9: 511 ft<sup>2</sup>

Total area of property in 206.7m<sup>2</sup> / 2225ft<sup>2</sup>